



MODEL HOME FEATURES

- Zero clearance entry
- Andersen windows
- Therma-tru fiberglass front door
- 9ft Ceilings on the 1st Floor
- Walk-in pantry
- Finished Rec. room in the basement
- Vinyl Shakes with stone accent exterior
- Maintenance free lawn, landscaping, and snow removal
- Large Covered front porch
- Rough-in plumbing in the basement

HOME PRICE: \$ 372,552.00

LOT 25 PRICE: \$ 39,000.00

LANDSCAPE & IRRIGATION: \$ 12,200.00

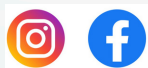
TOTAL HOME PRICE: \$ 423,752.00

HOA MAINTANCE FEE: \$166.00/MONTH



DESIGN AND QUALITY - A TRADITION

CONTACT US



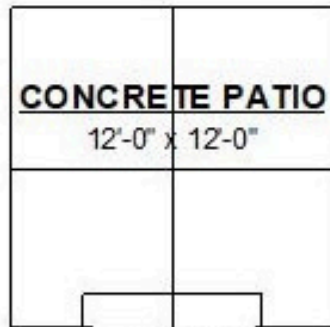
SCHROCKHOMES.COM



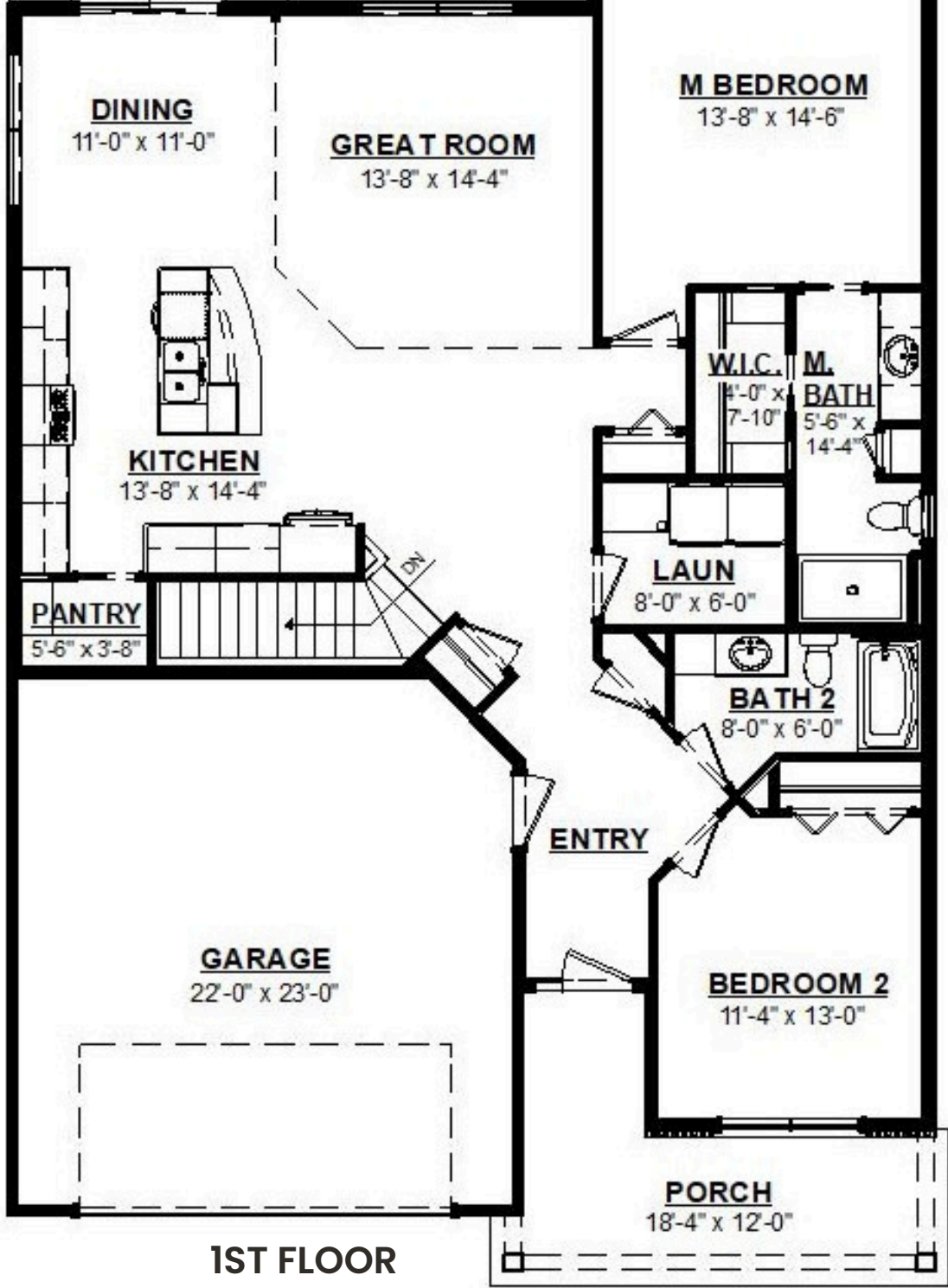
574-534-2706



2523 MESSICK DRIVE | GOSHEN, IN



1st Floor: 1,520 sq.ft.
Rec. room: 444 sq.ft.
Total Finished: 1,964 sq.ft.
Garage: 495 sq.ft.



SCHROCKHOMES.COM



574-534-2706



2523 MESSICK DRIVE | GOSHEN, IN